



# GENUINE COOPER CLASSIC MINI PARTS



Main photo by @gabriel\_robson

[coopercarcompany.com](http://coopercarcompany.com)

COOPER TUNING • STYLING • SPECIALIST MINI PARTS • MERCHANDISE



## Welcome

The Mini Cooper is of course known throughout the world as the fast Mini. An idea of my father - John Cooper, had, that the little family car designed by his friend Alec Issigonis, would make a great rally and racing car. Well, the Mini Cooper was born and indeed it did become a world-beater winning outright the Monte Carlo Rally 3 times.

The Mini Cooper ceased production in 1971, however during the 1980's Cooper, now run by my father and myself, started producing tuning kits for the classic Mini, converting customer cars into Mini Cooper's with Cooper performance. Along with many crafted accessories, the scene was set to re-introduce the classic Mini as a full factory Cooper. This was launched in 1990 and continued right up to 2000, until the all-new MINI Cooper was introduced.

Myself and my team continued to work on this new car with MINI, naming the high performance versions John Cooper Works in memory of my father John. The John Cooper Works cars are now the pinnacle of the MINI range.

Now in 2020, Cooper is still going strong! With a whole new range of quality Cooper Parts for the Classic Mini.

The Legend lives on!

Best wishes,  
John Michael Cooper



# A Brief History

It has been over 70 years since Charles Cooper and his son John founded the Cooper racing name that was to become synonymous with the now famous Mini Cooper. Working from their garage in Surbiton, they initially designed and built the famous Formula III Cooper 500, the first racing car with a rear-mounted engine, which went on to win many Championships with many famous names behind the wheel. The Cooper Car Company expanded through the late 1940's and early 1950's and continued to produce race-winning cars.

The company consolidated and built upon its early successes with Formula III, going on to be successful in Formula II and sports car racing before ultimately reaching the pinnacle of racing in Formula I. With Jack Brabham driving, Cooper Cars won the World Championship twice, in 1959 and 1960. The era of the rear-engined racing car, pioneered by John Cooper, and the pedigree of the Cooper name was established and here to stay.

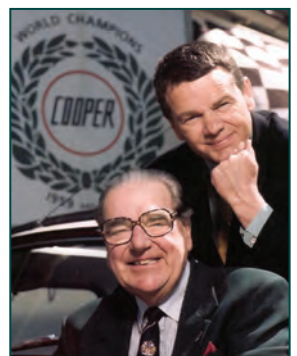
Coopers had by now enjoyed great success in nearly every racing formula. It was not long before the racing potential of the recently-launched Mini was realised. With the blessing of Sir Alec Issigonis, the car was soon re-engineered for saloon car racing and rallying. The Mini Cooper was more successful than anyone would believe possible, becoming the first British car to win the European Rally Championships while taking the chequered flag at the Monte Carlo Rally three times. The Cooper name was then firmly and irrevocably linked to the Mini. It became an icon of the swinging sixties with film stars, royalty, pop and rock stars all clamoring to get their hands on this famous little car. BMC went on to produce 150,000 Mini Coopers until production ceased in 1971.

In the late 80's John Cooper Garages was supplying Cooper conversion kits to a new generation of Mini enthusiasts. This clearly demonstrated that there was growing demand for a Mini Cooper with the same performance and kudos as the original.

Rover recognised the potential too and expressed an interest in the Mini Cooper's 'Renaissance'. John and Michael Cooper suggested that the Mini Cooper should be re-introduced for the 1990's.

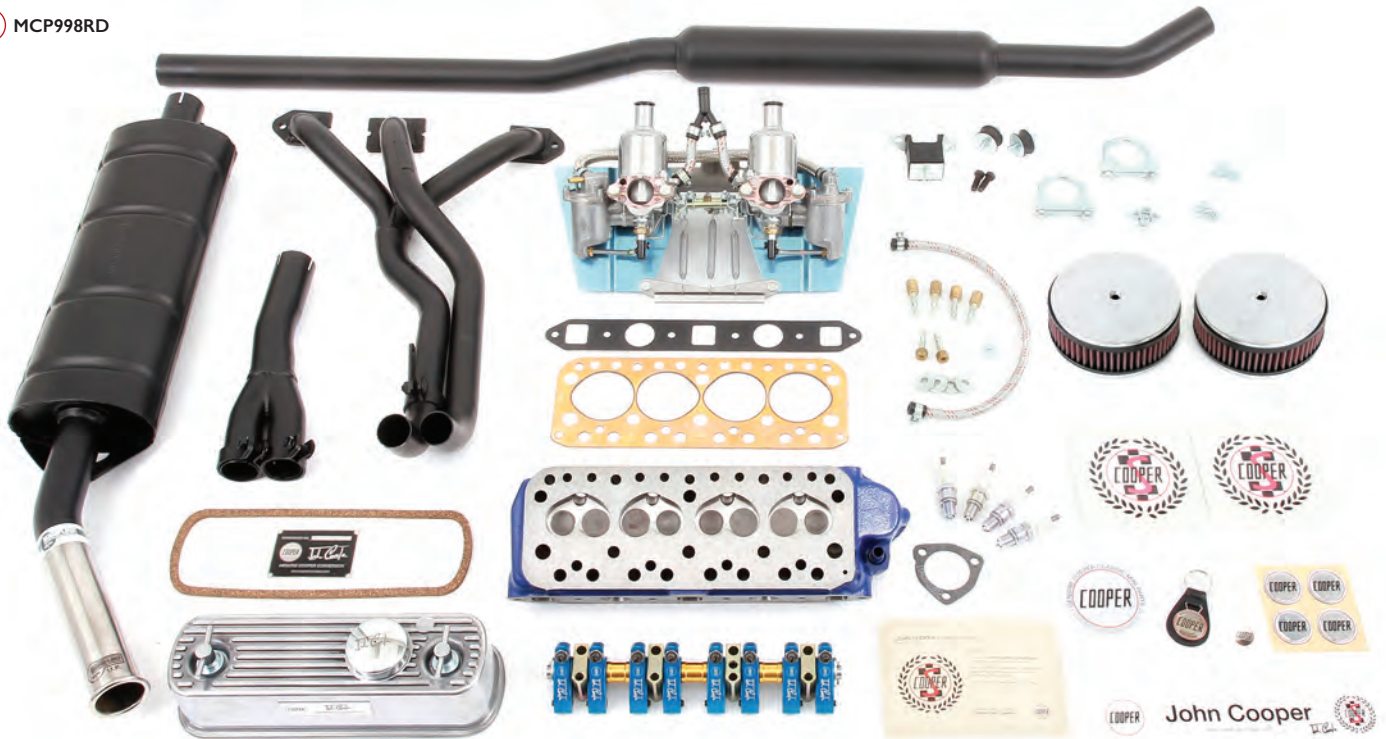
John Cooper Garages worked alongside Rover to re-engineer the A-Series engine in a way which would justify its Cooper badging, first developing its 1275cc carburetor version and then the 1.3 injection model. The re-launch of the Mini Cooper was an immediate success.

With an S, and then Si, conversion packs available from John Cooper Garages, followed by the introduction of a completely new Mini Cooper S, then Grand Prix, Cooper S Touring and Sport S, the Mini Cooper S variants have again proved the fastest, biggest-little car in the World. Cooper's development of the British Motor Corporation Mini - the Mini Cooper - was adored by both rally racers and ordinary road drivers.





1 MCP998RD



John Cooper conversions are renowned the world over for quality and reliability. All conversions are thoroughly tried and tested and will enhance the Mini Cooper driving experience.

**1. John Cooper 998cc Twin Carb 64bhp Conversion**

Our exchange performance cylinder head, new performance LCB exhaust manifold and system together with twin 1.25" SU carburettors and K&N air filters achieves approximately 64bhp. (Available for 998cc carburettor models)

**MCP998RD**

998 Twin carb 64bhp Conversion

**2. John Cooper 1275cc Twin Carb 80bhp Conversion**

Our exchange performance cylinder head, new performance LCB exhaust manifold and system together with twin 1.25" SU carburettors and K&N air filters achieves approximately 80bhp. (Available for 1275cc 1990-1994 Cooper Carburettor models)

**MCP1275RD**

1275 Twin carb 80bhp Cooper S + Pack

2 MCP1275RD\_MAS



**Tuning Kits for Carburettor Models include:**

- Cylinder Head - Finished in Cooper Blue
- High lift roller tip rockers with Cooper logo and John Cooper Signature (1.3 on 998 and 1.5 on 1275 kits)
- Manifold LCB Exhaust Manifold
- Manifold Twin Silencer Side Exit Exhaust
- Twin 1 1/4 SU carbs with K&N Air Filters
- Carburettor Needles - Cooper specification
- High Power NGK Spark plugs
- Polished Alloy Rocker Cover
- Chrome Rocker Cover Cap and T Bars
- Cooper Conversion Cross-member plate (uniquely numbered to your conversion)
- Cooper S Rear Quarter Decals
- Official Conversion Certificate
- Cooper Leather Key ring & Pin Badge
- John Cooper Rear Window Decal
- Cooper Silver Wheel Centre Cap Decals
- Complete fitting kit





## 1. John Cooper I275cc SPi 82bhp Conversion

This kit gives a boost in power to approximately 82bhp. This is achieved with larger inlet valves fitted to a polished and ported cylinder head and the addition of high lift valve rocker assemblies.

*(Suitable for all SPi Minis)*

**MCP1275SD**

I275cc SPi 82bhp Conversion

## 2. John Cooper Mini 1.3i MPi 85bhp S Works Conversion

This kit increases power output to approximately 85bhp. This kit includes a larger valve, ported cylinder head, high performance exhaust, improved fuelling and induction plus many more features.

*(Available for all Cooper models from 1997 onwards)*

**MCP1275SW**

1.3i MPi 85bhp S Works Conversion

## 3. Mini Cooper S Works Plus I275cc MPi Conversion

The S Works Plus kit contains the same components as the S Works conversion above, but with an airbox extension pipe and K&N filter element instead of the induction kit. Giving the increase in power whilst retaining a more original under bonnet look.

*(Available for all Cooper models from 1997 onwards)*

**MCP1275SWP**

I275cc MPi S Works Plus Conversion



① MCP1275SD\_MAS



② MCP1275SW\_MAS



③ MCP1275SWP\_MAS



## Tuning Kits for Injection Models include:

- Mini Road (ST3) I275 SPi/MPi Cylinder Head - Finished in Cooper Blue
- 1.5:1 High lift roller tip rockers - with Cooper logo and Signature
- Manifold LCB Exhaust Manifold
- Manifold Twin Silencer Side Exit Twin Upswept Exhaust system - Finished in Black with Stainless Tail Finishers
- K&N Cold Air Induction kit\*
- High Power NGK Spark plugs
- Polished Alloy Rocker Cover
- Chrome Rocker Cover Cap with T bars
- Cooper oil cooler kit
- Stainless Steel Braided Oil Cooler Pipes
- Cooper Conversion Cross-member plate (uniquely numbered to your conversion)
- Cooper S Rear Quarter Decals
- Official Conversion Certificate
- Cooper Leather Key ring & Pin Badge
- John Cooper Rear Window Decal
- Cooper Silver Wheel Centre Cap Decals
- Complete fitting kit





1 MCPLST006A/DTMIB



**1. Cooper Tuning Twin Silencer Exhaust System - Twin Upswept**

Cooper Tuning Twin Silencer Side Exit Exhaust with twin upswept tailpipes to suit all Mini Injection models fitted with catalytic convertor.  
MCPLST006A/DTMIB

**2. Cooper Tuning Twin Silencer Exhaust System**

Cooper Tuning Twin Silencer Side Exit Exhaust to suit all Mini Carb models fitted with LCB exhaust manifold.  
MCPLST001AB

**3. Cooper Tuning LCB Exhaust Manifold**

Cooper tuning LCB exhaust manifold to suit all Carb Mini's with pot joint drive couplings.  
MCPLM004B

**4. Cooper Tuning LCB Injection Manifold**

Cooper Tuning LCB Exhaust Manifold to suit all Mini Injection models. Comes complete with lambda sensor fitting and link pipe to catalytic convertor.  
MCPLM003IB

2 MCPLST001AB



**MANIFLOW**  
EXCLUSIVELY FOR





**1. Air Box Induction Pipe - S Works Mini MPi**

Specially reproduced from the designs and original specifications that were developed by the John Cooper Garages in the 1990's. Featuring the 'S' Works logo, you simply fix the Air Box Induction Pipe to the air filter air box with a single screw.

**MCPEN.AE**



**2** MCPEN.AEKIT



**2. Air Box Induction Kit - S Works Mini MPi**

Includes the Cooper 'S Works Air Box Induction pipe' and the Mini K&N filter that fits the Mini MPi models. This kit is a simple yet effective upgrade, directly replacing the original parts.

**MCPEN.AEKIT**

**3. Aluminium Billet Air Box Induction Pipe - S Works Mini MPi**

Machined from a solid aluminium billet this induction pipe improves on the specifications developed by John Cooper Garages in the 1990's. The induction pipe features a specially designed internal venturi. Anodised in black featuring the Cooper logo in silver relief on the top face. A striking change to the underbonnet look as well as engine performance.

**MCPEN.BAE**



**3** MCPEN.BAE

**4** MCPEN.BAEKIT

**4. Aluminium Billet Air Box Induction Kit - S Works Mini MPi**

Includes the Cooper 'S Works Aluminium Air Box Induction pipe' and the Mini K&N filter that fits the Mini MPi models.

**MCPEN.BAEKIT**



**5** MCPEN.DS-S

**5. Cooper Dipstick**

Stainless steel dipstick with polished billet alloy top and double o-ring oil seals, PTFE coated to resist dirt and corrosion. Comes complete with Cooper logo badge.

**MCPEN.DS-S**

**6. Cooper Engraved Dipstick**

Cooper stainless steel dipstick with a black or silver anodised knurled and engraved Cooper logo billet alloy top and double o-ring oil seals.

**MCPEN.DS18-EB Engraved Black**  
**MCPEN.DS18-ES Engraved Silver**

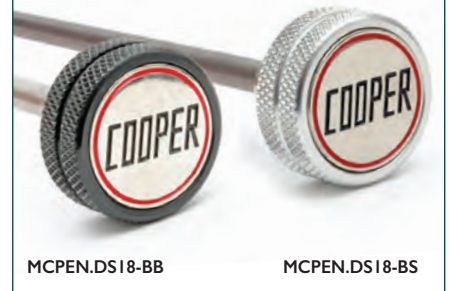


**6** Engraved Logo Dipstick

MCPEN.DS18-EB

MCPEN.DS18-ES

**7** Badged Logo Dipstick



MCPEN.DS18-BB

MCPEN.DS18-BS

**7. Cooper Badged Dipstick**

Cooper stainless steel dipstick with a knurled silver or black anodised billet alloy top, nickel Cooper logo badge and double o-ring oil seals.

**MCPEN.DS18-BB Badged Black**  
**MCPEN.DS18-BS Badged Silver**

**8. Cooper Rocker Cover**

Available in 2 options, crinkle black finish steel and a high quality mirror polished aluminium alloy rocker cover. Both come complete with rocker cover cap and cork gasket, and finished off with our Cooper engineered badge.

**MCPEN.RC-CR Crinkle Rocker Cover**  
**MCPEN.RC-AL Alloy Rocker Cover**



**8** MCPEN.RC-CR



**8** MCPEN.RC-AL

*John Cooper*  
**COOPER ENGINEERED**

**9. Cooper Engraved Rocker Cover Fixing Bolt**

Cooper knurled billet aluminium rocker cover fixing buttons. Anodised in black or silver with an engraved Cooper logo. Sold as a pair complete with rubbers and washers.

**MCPEN.TBARI8-EB Engraved Black**  
**MCPEN.TBARI8-ES Engraved Silver**



**9** Engraved Logo Rocker Cover Fixing Bolt

MCPEN.TBARI8-EB

MCPEN.TBARI8-ES

**10** Badged Logo Rocker Cover Fixing Bolt



MCPEN.TBARI8-BB

MCPEN.TBARI8-BS

**10. Cooper Badged Rocker Cover Fixing Bolt**

Cooper knurled and badged billet aluminium rocker cover fixing buttons. Anodised in black or silver with a nickel Cooper logo badge. Sold as a pair complete with rubbers and washers.

**MCPEN.TBARI8-BB Badged Black**  
**MCPEN.TBARI8-BS Badged Silver**



1 MCPBRKROAD.7.9V-B



1 MCPBRKROAD.7.9V-S

**1. Cooper 7.9" Vented 4 pot Alloy Caliper Brake Conversion Road Kit**

Cooper 4 pot alloy caliper kits specially designed to provide the ultimate braking performance for your Mini. Partnered in the kit with performance grooved, vented discs and Mintex pads, these calipers will give your Mini superb stopping power. Available in black or silver.

**Kit contains:**

- 2 x Cooper 7.9" vented 4 pot alloy brake calipers
- 2 x 7.9" vented grooved performance brake discs
- 1 x Mintex brake pad set
- 4 x caliper mounting bolts
- 4 x spring washers
- 4 x flat washers
- 8 x drive flange bolts

Kit is designed to allow the fitment of vented discs under most 10" wheels and will fit with any 12" or 13" wheel.

MCPBRKROAD.7.9V-B  
MCPBRKROAD.7.9V-S

Black Calipers  
Silver Calipers

2 MCPBRKROAD.8.4S-S



2 MCPBRKROAD.8.4S-B

**2. Cooper 8.4" Std 4 pot Alloy Caliper Brake Conversion Road Kit**

Cooper 4 pot alloy caliper kits specially designed to provide the ultimate braking performance for your Mini. Partnered in the kit with 8.4" discs and Mintex pads, these calipers will give your Mini superb stopping power. Available in black or silver.

**Kit contains:**

- 2 x Cooper 8.4" 4 pot alloy brake calipers
- 2 x 8.4" brake discs
- 1 x Mintex brake pad set
- 4 x caliper mounting bolts
- 4 x spring washers
- 4 x flat washers
- 8 x drive flange bolts

This 8.4" 4 pot caliper kit is designed as a direct replacement for the standard 8.4" Mini calipers and will fit with any 12" or 13" wheel.

MCPBRKROAD.8.4S-B Black Calipers  
MCPBRKROAD.8.4S-S Silver Calipers

3 MCPBRKROAD.8.4V-R



**3. Cooper 8.4" Vented 4 pot Alloy Caliper Brake Conversion Road Kit - Special Edition**

The Calipers are precision CNC manufactured in the UK from aircraft grade solid aluminium billets and are finished with a special high temperature coating in 'Brilliant Red' with a reflective Cooper logo on the front face. Hand built with anodised aluminium pistons, stainless steel bolts and high temperature piston seals. Partnered in the kit with grooved, vented discs, these calipers will give your Mini superb stopping power. Designed to convert an existing Mini disc brake assembly this Cooper 4 Pot alloy caliper brake kit has been specially developed to maximise your Mini's braking performance.

**Kit contains:**

- 2 x 8.4" 4 pot alloy brake calipers in brilliant red
- 2 x 8.4" vented grooved brake discs
- 1 x Mintex brake pad set
- 4 x Caliper mounting bolts
- 4 x Flat washers for caliper bolts
- 4 x Spring washers for caliper bolts

Easy to fit and can be used under any 12" or 13" wheel.  
MCPBRKROAD.8.4V-R Red Calipers





1 MCPBRK.7.9V-B



1 MCPBRK.7.9V-S

**1. 7.9" Vented Brake Kit with 4 Pot Alloy Calipers**

Cooper 4 pot alloy caliper kits Specially designed to provide the ultimate braking performance for your Mini. Partnered in the kit with performance grooved, vented discs and EBC greenstuff pads, these calipers will give your Mini superb stopping power. Available in black or silver.

**Kit contains:**

- 2 x Cooper 7.9" vented 4 pot alloy calipers
- 2 x 7.9" Vented grooved performance discs
- 1 x EBC Greenstuff brake pad set
- 2 x Drive flanges
- 2 x Drive flange collars
- 2 x Drive flange nuts
- 4 x Caliper mounting bolts
- 4 x Spring washers
- 4 x Flat washers
- 8 x Drive flange bolts

Kit is designed to allow the fitment of vented discs under most 10" wheels and will fit with any 12" or 13" wheel.

**MCPBRK.7.9V-B** Black Calipers  
**MCPBRK.7.9V-S** Silver Calipers

2 MCPBRK.8.4S-S



2 MCPBRK.8.4S-B

**2. Cooper 8.4" Brake Kit with 4 Pot Alloy Calipers**

Cooper 4 pot alloy caliper kits are specially designed to provide the ultimate braking performance for your Mini. Manufactured in the UK, hand built with stainless steel bolts and high temperature piston seals. Partnered in the kit with performance grooved/drilled discs and Mintex pads, these calipers will give your Mini superb stopping power. Available in black or silver.

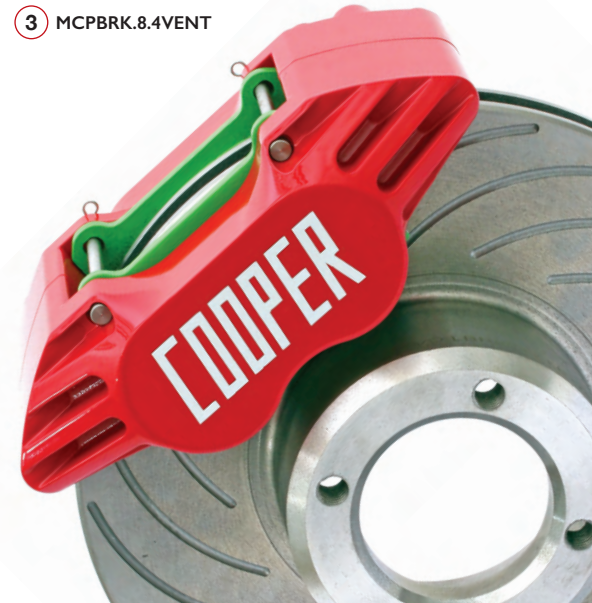
**Kit contains:**

- 2 x Cooper 8.4" 4 pot alloy calipers
- 2 x 8.4" grooved & drilled performance discs
- 1 x Mintex brake pad set
- 2 x Drive flanges
- 2 x Drive flange collars
- 2 x Drive flange nuts
- 4 x Caliper mounting bolts
- 4 x Spring washers
- 4 x Flat washers

Perfect for road, rally and race use this 8.4" 4 pot caliper kit is designed as a direct replacement for the standard 8.4" Mini disc brakes and will fit with any 12" or 13" wheel.

**MCPBRK.8.4S-B** Black Calipers  
**MCPBRK.8.4S-S** Silver Calipers

3 MCPBRK.8.4VENT



**3. Cooper 8.4" Vented Brake Kit with Red 4 Pot Alloy Calipers**

Precision CNC manufactured in the UK from aircraft grade solid aluminium billets and finished with a special high temperature coating in 'Brilliant Red' with a reflective Cooper logo on the front face. Hand built with anodised aluminium pistons, stainless steel bolts and high temperature piston seals. Partnered in the kit with performance grooved, vented discs and EBC greenstuff pads.

**Kit contains:**

- 2 x Cooper 8.4" vented 4 pot alloy brake calipers in brilliant red with reflective logo
- 2 x 8.4" Vented grooved brake discs
- 1 x EBC Greenstuff brake pad set
- 4 x Caliper mounting bolts
- 4 x Flat washers for caliper bolts
- 4 x Spring washers for caliper bolts
- 8 x Drive flange bolts

This 8.4" vented alloy caliper kit is easy to fit and can be used under any 12" or 13" wheels.

**MCPBRK.8.4VENT** Red Calipers



1 MCPXS.WCB

1 MCPXS.WCB-R

2 MCPXS.MWCB-R



3 MCPXS.FFC-MRH

### 1. John Cooper Winged Badge

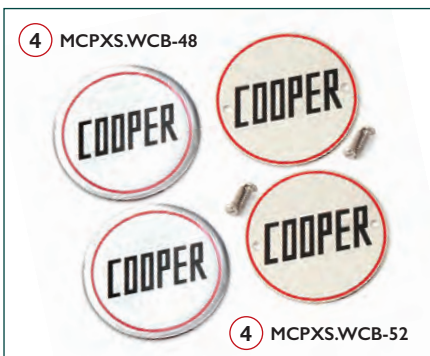
A single John Cooper Winged Badge. Simply sticks on the bonnet or boot of your Mini Cooper!

MCPXS.WCB Silver  
MCPXS.WCB-R Red

### 2. John Cooper Enamel Badge

Back by popular demand, these red enamel metal Cooper badges are a close reproduction of the original 1990's Cooper Garages badge centre. Designed to be used as a replacement centre emblem for the late Mini winged badges or as wheel centre cap badges. Comes with 3M backing sticker. Sold individually.

MCPXS.MWCB-R



4 MCPXS.WCB-48

4 MCPXS.WCB-52

### 3. Cooper Chrome Fuel Cap

Beautifully polished finish, this fuel cap is available for left or right hand fuel tanks. John Cooper Signature. Non-lockable.

MCPXS.FFC-MRH RH  
MCPXS.FFC-MLH LH

### 4. Cooper Silver Wheel Badges

Direct replacements for the centre caps. Available in self adhesive vinyl or screw fix nickel plated stamped finished with holes.

MCPXS.WCB-48 Vinyl  
MCPXS.WCB-52 Metal



**1. John Cooper Grille Buttons**

Originally designed to allow fast removal and re-fitting of the grille in competition. Many people now use them as a styling addition to enhance the Mini's front end. Cooper knurled billet aluminium grille buttons with Engraved logo or nickel Cooper logo badge. Anodised in black or silver. Sold as a pair complete with fittings.

- MCPXS.GB18-EB Engraved Black
- MCPXS.GB18-ES Engraved Silver
- MCPXS.GB18-BB Badged Black
- MCPXS.GB18-BS Badged Silver



**2. Cooper S Rear Quarter Decals**

Genuine Cooper S rear quarter panel decal by the Cooper Car Company. Supplied as a pair. Available in 3 Colours.

- MCPXS.RQD-W White
- MCPXS.RQD-S Silver
- MCPXS.RQD-B Black



**3. John Cooper Door Signature**

A single John Cooper chrome door signature, complete with laser cut 3M body foam ready to attach on your Mini Cooper! MCPXS.JCS

**4. John Cooper Bonnet Stripes**

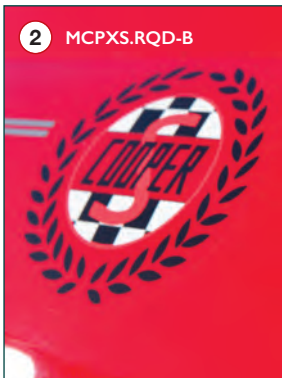
A high quality, specially commissioned reproduction of the original Mini RSP bonnet stripes from the early 1990's Coopers. Made from top quality 7 year vinyl and laminated for maximum resistance to the elements. Available in white only. Suitable for RSP Mini's, and all Coopers since. Sold as a pair.

MCPDAFI0382/83

**5. John Cooper Signature Decal**

The perfect finishing addition for your existing bonnet stripes. John Cooper signature decals made from top quality vinyl and laminated for maximum resistance to the elements. Comes with fitting instructions on where to fit over the white Cooper RSP bonnet stripes. Available in black only for contrasting bonnet stripes. Sold as a pair.

MCPDAFI0385





**LIMITED EDITION 50**



**LIMITED EDITION 50**

Individually Numbered 1-50

Engraved John Cooper Signature

18 Rivets around Dark Wood Rim

Polished Cooper Logo Centre Cap

MK1 style Boss Kit

Perforated Black Leather & Red Stitching



**1. LIMITED EDITION Leather 'Silverstone' Cooper Steering Wheel**

13" distinctive 3 spoke, 3 hole racing steering wheel design, finished in hand sewn black perforated leather rim with a rubber underlay, complimented with red stitching. Each steering wheel features an engraved John Cooper signature & are individually numbered 1-50. Complete with a MK1 style Cooper Boss kit fitted for that 60's look. Designed to fit all Mini's up to '97.  
MCPIS.SWL18-PLTD

**2. LIMITED EDITION Wooden 'Monza' Cooper Steering Wheel**

13" distinctive 1960's style 3 spoke slotted design racing steering wheel, handcrafted using an exceptional sapele dark wood finish with 18 rivets around the rim. Each steering wheel features an engraved John Cooper signature & are individually numbered 1-50. Complete with a MK1 style Boss kit fitted for that 60's look. Designed to fit all Mini's up to '97.  
MCPIS.SWW18-PLTD

**3. Cooper Steering Wheel**

13" 3 spoke steering wheel, in a handcrafted wood finish with 18 rivets around the rim, or finished in hand sewn black leather rim with a rubber underlay. Both steering wheel features an engraved John Cooper signature, complete with a fitting boss kit and polished Cooper centre cap. Closely modelled on the sixties Grand Prix cars, a John Cooper steering wheel adds a touch of class to any Mini. Available with or without a horn.

- MCPIS.SWW-P      **Wooden Rim (No Horn)**
- MCPIS.SWI-P      **Leather Rim (No Horn)**
- MCPIS.SWW-PH    **Wooden Rim (Horn)**
- MCPIS.SWL-PH    **Leather Rim (Horn)**
- MCPIS.SWW-PHMK1 **Wooden Rim (Horn & MK1 Boss Kit)**
- MCPIS.SWL-PHMK1 **Leather Rim (Horn & MK1 Boss Kit)**

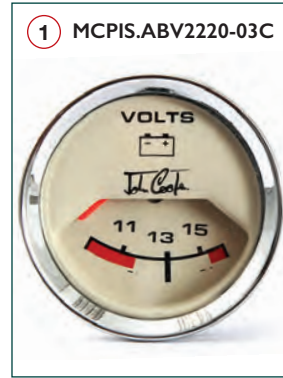
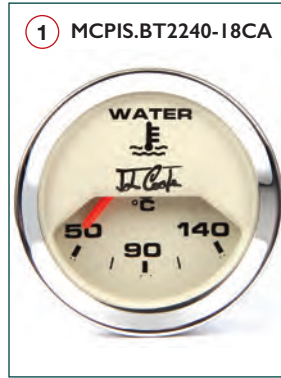
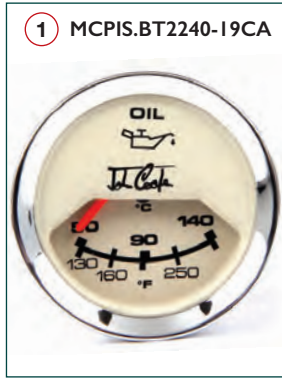
③ MCPIS.SWW

*Moto-Lita*



③ MCPIS.SWL

Designed and built by the world renowned Mota Lita company.



**1. Cooper Dashboard Gauges**

A nostalgic collection, re-produced to the high quality and distinctive styling of the Smiths classic range for Mini. Finished with the iconic John Cooper signature. Suitable for dashboards and interiors fitted with central auxiliary holes. Magnolia face and Chrome ring outer - Diameter: 52mm.

- MCPIS.CAI100-02C
- MCPIS.PL2328-03C
- MCPIS.PL2328-03C
- MCPIS.BT2240-18CA
- MCPIS.ABV2220-03C

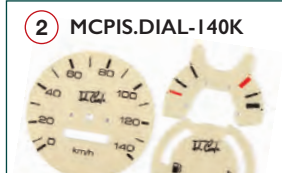
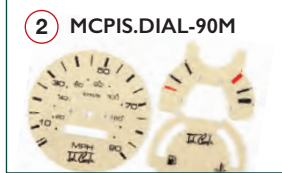
- Analogue Clock
- Oil Pressure (LBs)
- Oil Temperature (°C)
- Water Temperature (°C)
- Voltmeter

**2. Magnolia Clock Dial Set**

Transform the look of your Mini's dashboard with this dial set featuring John Cooper's signature. Made in the UK from heavy duty material, these dials replace the original instrument faces and not merely cover them up. For use in later Mini's with Nippon Seiki instruments and are available in 2 or 3 clock, MPH or KPH sets.

- MCPIS.DIAL-90M
- MCPIS.DIAL-140K
- MCPIS.DIAL-110M
- MCPIS.DIAL-180K

- 90 MPH 2 Clock
- 140 KPH 2 Clock
- 110 MPH 3 Clock
- 180 KPH 3 Clock



**3. Quickshift Gear Lever Kit**

Suitable for use with all rod change Classic Mini gearboxes. Kit includes lightened Cooper Boss with engraved John Cooper signature, modified gear lever, 2018 Cooper aluminium gear knob, and also comes with spring and cap.

- MCPEN-QUICK18-B
- MCPEN-QUICK18-S

- Black
- Silver



**4. 2018 Aluminium Gear Knob**

Lighter specialist design for 2018, the anodised and diamond cut billet aluminium gear knob features a nickel Cooper logo, engraved John Cooper signature, and also sports 2 lines on the stem, which signify the 2 F1 championships won by Cooper.

- MCPIS.GK18-B
- MCPIS.GK18-S

- Black
- Silver



**5. Cooper Aluminium Gear Knob**

Polished alloy gear knob, re-engineered to the original 1990's design and completed with a Cooper logo on top. Includes an engraved John Cooper signature on the stem.

- MCPIS.GK-S





**1. 2018 Cooper Alloy Billet Door Furniture Kit**

Exclusive Cooper classic Mini door lock covers, handles, pulls and window winders are a new slimline linear design with a cool retro feel, the angled design on this alloy billet kit give the nostalgic feeling of the 1960's era of the Mini Cooper. A perfect replacement for the standard door furnishings. Available in black or silver with nickel Cooper logo badge.  
 MCPIS.DFK18-B Black    MCPIS.DFK18-S Silver

**2. Door Pulls**

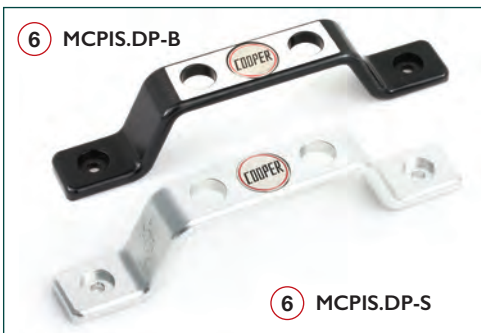
Pair of slimline linear Cooper door pulls.  
 MCPIS.DP18-B Black  
 MCPIS.DP18-S Silver

**3. Window Winders**

Pair of slimline linear window winders.  
 MCPIS.WW18-B Black  
 MCPIS.WW18-S Silver

**4. Door Openers**

Pair of slimline linear Cooper door openers.  
 MCPIS.DO18-B Black  
 MCPIS.DO18-S Silver



**5. Cooper Alloy Billet Door Furniture Kit**

Exclusive John Cooper classic Mini alloy billet door lock covers, handles, pull and winders have been faithfully re-engineered to the original 1990's design with an ultrafine diamond cut machine finish, complete with the John Cooper Signature.  
 MCPIS.DFK-B Black    MCPIS.DFK-S Silver

**6. Door Pulls**

Pair of re-engineered 90's design door pulls.  
 MCPIS.DP-B Black    MCPIS.DP-S Silver

**7. Window Winders**

Pair of re-engineered 90's design winders.  
 MCPIS.WW-B Black    MCPIS.WW-S Silver

**8. Door Openers**

Pair of re-engineered 90's design door openers.  
 MCPIS.DO-B Black    MCPIS.DO-S Silver

**9. Door Lock Covers**

Pair of re-engineered 90's design Openers.  
 MCPIS.DL-B Black    MCPIS.DL-S Silver



**1. Seat Extension Brackets**

Anodised black for original equipment finish, these brackets are finished with the John Cooper signature in silver. Supplied as a pair, with fitting bolts.

**MCPIS.SAB**                      **Black**

**2. Handbrake Grip**

Cooper billet aluminium handbrake lever grip anodised in silver with engraved Cooper Logo. Universal fitting so suitable for all models of classic Mini, both LH and RH drive models. Complete with fittings.

**MCPIS.HB18-S**                      **Silver**



① MCPIS.SAB

**3. Pair of Stainless Door Sill Edgings**

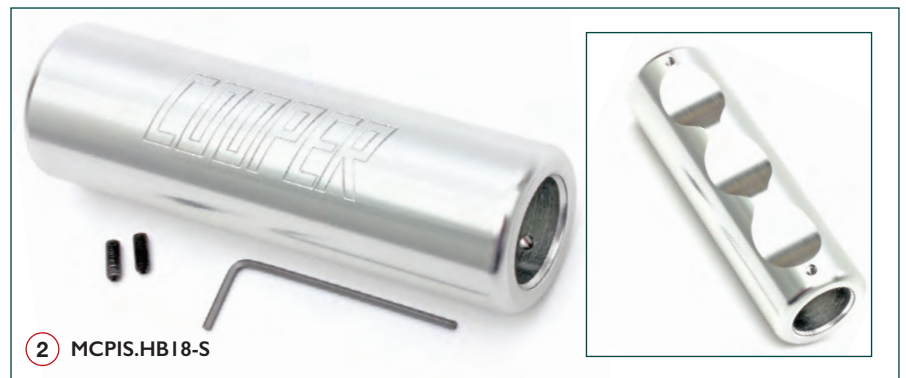
A nice finishing touch, makes a classy entrance to your Mini! Made from stainless steel and laser etched with John Cooper signature and logo.

**MCPXS.DSE**                      **Stainless Steel**

**4. Seat Tilt Knobs**

Replacement seat recline/release knob handle made from knurled billet aluminium. Available in black or silver, engraved with Cooper logo or finished with nickel Cooper logo badge. Sold as a pair.

- MCPIS.STK18-EB**                      **Engraved Black**
- MCPIS.STK18-ES**                      **Engraved Silver**
- MCPIS.STK18-BB**                      **Badged Black**
- MCPIS.STK18-BS**                      **Badged Silver**



② MCPIS.HB18-S

③ MCPXS.DSE



④ MCPIS.STK18-EB



④ MCPIS.STK18-ES



④ MCPIS.STK18-BB



④ MCPIS.STK18-BS





1 MCPCC.COVG

1 MCPCC.COVGMP

**1. Indoor Mini Car Cover**

A fully tailored soft and stretchy polar fleece fabric indoor dust cover for all Mini Saloon models. With the Cooper logo on the bonnet and finished in racing green with contrasting white piping. Comes in Cooper branded drawstring bag.

- MCPCC.COVGMP With Mirror Pockets
- MCPCC.COVG Without Mirror Pockets

**2. John Cooper Mini Care**

Hand made in UK exclusively by Auto Finesse for Cooper Car Company, to keep your Mini looking its best whilst giving protection from the elements. Each contains 500ml.

- MCPCC.PAK Full kit
- MCPCC.TT Mini Tyre & Trim
- MCPCC.WC500 Mini Wheel Cleaner
- MCPCC.SH500 Mini Shampoo
- MCPCC.WAX Mini Car Wax
- MCPCC.POL Mini Polish

**3. John Cooper Super Luxury Car Mats**

A Super luxury, tailored 4 piece black carpet mat set featuring Cooper logo metal badges on both front mats and nu-buck edge binding. Extra strong mat set, made in the UK from 1200 gram deep pile tufted velour with a bound edge and a non slip, rubber backing.

- MCPIS.CM-SL Metal Badge

**4. John Cooper Luxury Car Mats**

Luxury, tailored 4 piece black carpet mat set with embroidered Cooper logo and John Cooper signature on both front mats, finished off with black binding, black and silver binding or black and red binding. Made in the UK from 900 gram tufted velour with a bound edge and a non slip, rubber backing.

- MCPIS.CM-BB Black Binding
- MCPIS.CM-BBS Black & Silver Binding
- MCPIS.CM-BR Black & Red Binding

**5. John Cooper Luxury Signature Car Mats**

Luxury, tailored 4 piece 900 gram tufted velour carpet mat set featuring a white wipe-clean vinyl stripe embroidered with the John Cooper signature on both front mats.

- MCPIS.CM-SS Signature Stripe



2

2

2

2

2

3 MCPIS.CM-SL



Metal Cooper Logo Badge

4 MCPIS.CM-BB



4 MCPIS.CM-BBS



4 MCPIS.CM-BR



5 MCPIS.CM-SS







**1. F1 Champions Leather Key Fob**

Cooper leather key fob finished with a nickel plated stamped bronze Cooper medallion, which is 2 colour enamelled and then mirror polished celebrating Cooper's 2 F1 World championship wins. Available in 2 sizes.

**MCPMC.KF-L** Large (35mm Badge)  
**MCPMC.KF-LS** Small (20mm Badge)



**2. John Cooper Chrome Signature Key Ring**

A single mirror polished John Cooper Chrome Signature complete with stainless key ring.

**MCPMC.KF-JC**

**3. Cooper Vented Umbrella**

This sturdy umbrella belongs on your Mini's rear parcel shelf - Featuring British racing green and white panels and sporting the legendary Cooper logo. Vented canopy for increased flexibility and stability in windy conditions fibreglass stem and ribs, foam grip handle and complete with colour co-ordinated sleeve.

**MCPMC.UMB**



3 MCPMC.UMB

**4. Cooper Drinks Coasters**

Set of 4 British-made silver grain aluminium front featuring iconic Cooper Car Company logo, Cork backed coasters.

**MCPMC.CSRSET** Set of 4

**5. Cooper Lapel Pin Badge**

Exclusive Cooper pin badge, nickel plated, 2 colour enamelled with the Cooper logo and then mirror polished.

**MCPMC.CPB**

**6. John Cooper Rear Window Sticker**

Reverse printed on white vinyl with both the Cooper logo and Cooper S logo at each side and completed with the John Cooper name and John Cooper signature. A remastered version of the John Cooper garages stickers of the 1990's.

**MCPXS.RWS**

**7. Cooper Sew On Badge**

Embroidered Cooper logo circle material patch featuring a heat reactive glue-embossed back. Diameter 8cm.

**MCPMC.SOB**

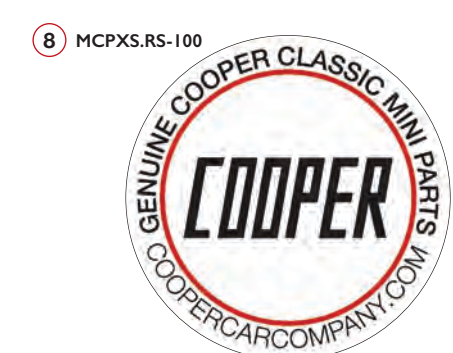


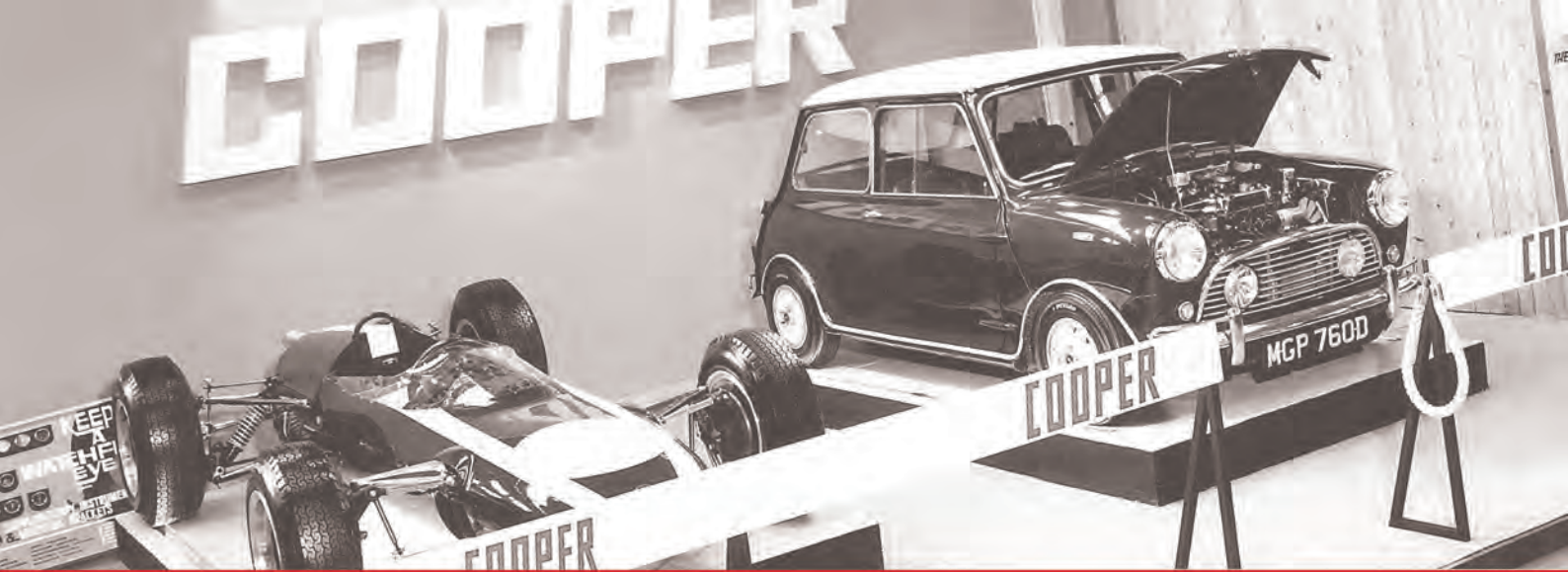
**8. Cooper Circular Sticker**

Exclusive 90mm round Cooper logo white vinyl sticker can be used anywhere from your Mini to your garage!

**MCPXS.RS-100**

6 MCPXS.RWS





## WORLDWIDE AUTHORISED DEALERS

### UK

Mini Sport Ltd,  
Thompson Street,  
Padiham, Lancashire,  
England.  
BB12 7AP  
Tel: +44 1282 778731  
sales@minisport.com

[www.minisport.com](http://www.minisport.com)

### Belgium

Mini Garage Aalst,  
Brusselsesreenweg 82,  
Aalst,  
Belgium.  
9300  
Tel: +32 4763 24072  
mini.garage.aalst@telenet.be

### France

The Little Car Shop,  
Le Bourg,  
Angoville sur AY,  
France.  
50430  
Tel: +33 680 226761  
infos@thelittlecarshop.com

[www.thelittlecarshop.com](http://www.thelittlecarshop.com)

### Germany

Classic Mini Centre  
Brunssum,  
Haefland 15, Brunssum,  
Netherlands.  
6441 PA  
Tel: +31 455 270 270  
sjaak@sjaakvdbergh.nl

[www.classicminisbrunssum.nl](http://www.classicminisbrunssum.nl)

### Italy

Just Minis,  
Via Milano 57,  
Cesano Boscone,  
Milan,  
Italy. 20090  
Tel: +39 289 695625  
info@justminis.it

[www.justminis.it](http://www.justminis.it)

### Netherlands

Ben van Leeuwen,  
Korteraarseweg 93,  
Ter Aar,  
Netherlands.  
2461 GJ  
Tel: +31 172 573 478  
info@benvanleeuwen.com

[www.benvanleeuwen.com](http://www.benvanleeuwen.com)

### Netherlands

Cooper World,  
Industrieweg 30,  
Rogat,  
Netherlands.  
7949 AK  
Tel: +31 522 440 380  
info@cooperworld.nl

[www.cooperworld.nl](http://www.cooperworld.nl)

### Netherlands

Classic Mini Centre,  
Haefland 15,  
Brunssum,  
Netherlands.  
6441 PA  
Tel: +31 455 270 270  
sjaak@sjaakvdbergh.nl

[www.classicminisbrunssum.nl](http://www.classicminisbrunssum.nl)

### Spain

The Mini World,  
Poligono Industrial,  
Estepona, Malaga,  
Spain.  
29680  
Tel: +34 952 800776  
ventas@theminiworld.com

[www.theminiworld.com](http://www.theminiworld.com)

### Japan

Turtle Trading,  
23 Asahidai,  
Negishi,  
Yokohama,  
Japan. 231-0854  
Tel: +81 42-9465611  
sabu@turtle-trading.co.jp

[www.turtle-trading.co.jp](http://www.turtle-trading.co.jp)

### Taiwan

BR Mini  
No. 864, Sec. 3,  
Huanzhong Road,  
Xitun Dist.,  
Taichung 407, Taiwan  
Tel: +886 4 22515051  
brmini864@gmail.com

### Mexico

Casta Autorrefacciones  
Calle Viveros de Asís 84,  
Hab Viveros de la Loma,  
54080 Tlalnepantla,  
Méx., Mexico  
Tel: (55) 53-61-64-89  
servicio@castamexico.com.mx

[www.castamexico.com](http://www.castamexico.com)

